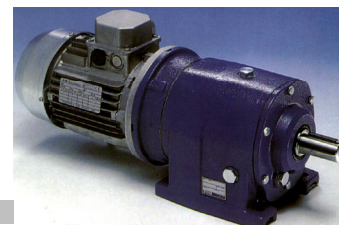


TRANSMISIONES

- *Reductores y Motorreductores*

- *Motores*

- *Variadores de Velocidad*



2021

[ABACtransmisiones S.R.L.](#)

Marcos Sastre 4796 - Buenos Aires - Argentina
Telefax:(54-11) 4566-3609 // 4648-2034
E-MAIL: abac@abactransmisiones.com.ar

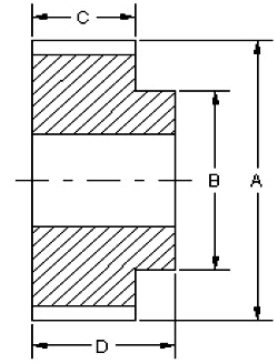
INDICE

ENGRANAJES RECTOS Pág. 3

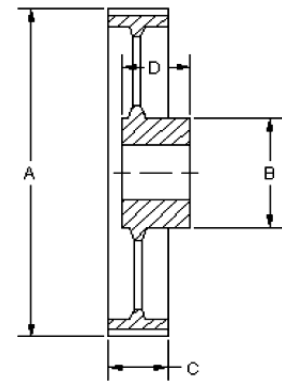
ENGRANAJES

CILINDRICOS – Dentado Recto

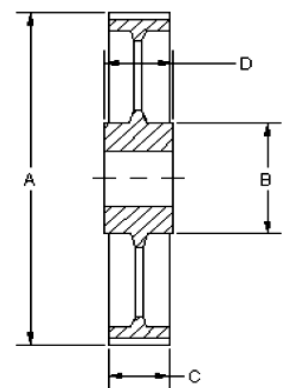
Módulo	Dientes	DIMENSIONES mm.				Eje Max.	Forma	POTENCIA HP SEGUN LAS RPM			
		A	B	C	D			50	200	500	1200
1.5	15	25.5	18	15	30	7	I	0.03	0.07	0.14	0,2
	17	28.5	20	15	30	8	I	0.04	0.1	0.18	0,3
	19	31.5	22	15	30	10	I	0.06	0.15	0.23	0,4
	21	34.5	24	15	30	12	I	0.07	0.2	0.3	0,5
	23	37.5	26	15	30	14	I	0.09	0.2	0.3	0,6
	25	40.5	28	15	30	15	I	0.12	0.25	0.4	0,7
	38	60	47	15	30	25	I	0.15	0.3	0.55	0,8
	57	88.5	50	15	30	40	I	0.2	0.4	0.7	0,9
	76	117	50	15	30	40	II	0.15	0.3	0.55	-
	95	145.5	50	15	30	40	II	0.2	0.35	0.65	-
2	15	34	25	20	32	13	I	0.15	0.7	1.6	2,3
	17	38	25	20	32	13	I	0.2	0.8	1.7	2,5
	19	42	30	20	32	16	I	0.25	0.9	1.8	2,8
	21	46	32	20	32	17	I	0.3	1	2	3,1
	23	50	36	20	32	20	I	0.35	1.2	2.2	3,3
	25	54	40	20	32	22	I	0.4	1.3	2.4	3,5
	38	80	60	20	32	35	I	0.6	2	3.3	5
	57	118	60	20	38	35	II	0.4	1.2	2.1	-
	76	156	65	20	38	38	II	0.5	1.5	2.7	-
	95	194	70	20	38	40	II	0.6	1.65	2.8	-
3	15	51	37	30	45	20	I	0.4	2	4	6
	17	57	37	30	45	20	I	0.6	2.35	4.9	7,5
	19	63	43	30	45	25	I	0.8	2.75	5.4	8,5
	21	69	49	30	45	28	I	0.9	3.1	6	9,25
	23	75	55	30	45	30	I	1	3.5	6.5	10
	25	81	61	30	45	35	I	1.1	4	7.4	11
	38	120	70	30	50	40	II	0.8	2.1	4.8	-
	57	177	70	30	50	40	II	1.2	3.75	7	-
	76	234	75	30	50	40	II	1.5	4.8	8.3	-
	95	291	80	30	50	45	II	1.6	5	8.6	-
4	15	68	50	40	55	28	I	1.1	3.7	6	8,5
	17	76	50	40	55	28	I	1.5	4.9	8.5	12,5
	19	84	58	40	55	30	I	1.8	5.8	10.9	15,5
	21	92	66	40	55	35	I	2	6.3	11.6	16,7
	23	100	74	40	55	40	I	2.2	6.9	12.5	18
	25	108	82	40	55	45	I	2.45	7.7	13.6	19
	38	160	70	40	60	40	I	1.7	5.2	10.5	-
	57	236	75	40	60	40	II	1.9	5.9	9	-
	76	312	80	40	60	45	II	2	6.9	-	-
	95	388	80	40	60	45	II	3.2	7.5	-	-
5	15	85	65	50	70	32	I	1.6	5	8.5	11
	17	95	67	50	70	35	I	2.1	6.8	12.7	18,5
	19	105	77	50	70	40	I	2.6	7.9	15.1	21
	21	115	87	50	70	45	I	2.9	9.4	17	23
	23	125	97	50	70	50	I	3.4	10.5	18.5	25
	25	135	107	50	70	55	I	3.8	12	20	27
	38	200	80	50	75	45	II	2.5	6.8	12	-
	57	295	90	50	75	50	II	4	10	14.5	-
	76	390	95	50	75	50	II	5	12	-	-
	95	485	95	50	75	50	II	6	13	-	-
6	15	102	75	60	80	40	I	3.5	10	17	23
	17	114	88	60	80	45	I	4	13.5	23.5	36
	19	126	100	60	80	50	I	5	17	27	38
	21	138	100	60	80	55	I	5.5	17.5	30	42
	23	150	110	60	80	60	I	6	19	31	45
	25	162	110	60	80	60	I	7	20	33	48
	38	240	120	60	80	65	III	4.5	12	18.5	-
	57	354	120	60	80	70	III	7	16	-	-
	76	468	140	60	85	75	III	8.5	18.5	-	-
	95	582	140	60	85	75	III	10	19.5	-	-



FORMA I



FORMA II



FORMA II